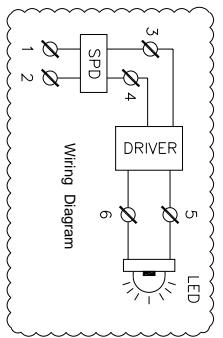


Light Fitting Standard Specification :

- a) WATTAGE : 50 WATTS
- b) VOLTAGE : 140V-270V AC
- c) POWER FACTOR : >0.95
- d) INPUT FREQUENCY : 50 Hz
- e) EFFICACY : >100 LUMEN PER WATT
- f) COLOUR (CCT) : 3000K/5700K/6500K/OR AS SPECIFIED
- g) CRI : >80 RA
- h) TOTAL HARMONIC DISTORTION : ≤ 10% THD
- i) BEAM ANGLE : 120 DEGREE
- j) SURFACE TEMPERATURE : MAX. 70°
- k) SURGE PROTECTION : 10 KV SPD

Light Fitting Options :

- 1) MATERIAL CONSTRUCTION : STAINLESS STEEL
- 2) VOLTAGE : 220V DC/110V AC/110V DC/24V AC
- 3) GLASS TYPE : DOME / FLAT / LENS
- 4) BEAM ANGLE : LENS AVAILABLE 60/90/120 DEGREE
- 5) LED MAKE : CITIZEN/OSRAM/BRIDGELUX/EQUIVALENT
- 6) DRIVER MAKE : OSRAM/PHILIPS/FULHAM/EQUIVALENT
- 7) CABLE GLAND & PLUG : BRASS/S.S./ALUMINIUM
- 8) WIRE GUARD : M.S. WHITE EPOXY POWDER COATED / S.S.



Reference IS/IEC Standard as follows :

- 1 - FLAMEPROOF (Ex d) PROTECTION - IIA/IB & IIC, IS/IEC 60079-1 (2014)
- TEMPERATURE CLASS - T6
- 2 - INGRESS (IP) PROTECTION - IP-66, IS/IEC 60529 (2001). (Reaffirmed 2014)

Standard Specification :

- 1 - MATERIAL - CAST ALUMINIUM ALLOY
- 2 - FINISH - INSIDE & OUTSIDE LIGHT GREY EPOXY POWDER COATING SHADE No. 631 AS PER IS-5
- 3 - EARTHING - 1 No. INSIDE & 2 Nos. OUTSIDE M6 SIZE S.S./BRASS SCREWS WITH 2 Nos. PLAIN WASHER
- 4 - HARDWARE - STAINLESS STEEL
- 5 - GASKET - 'O' RING ENDLESS NEOPRENE RUBBER GASKET
- 6 - MOUNTING ARRGT. - AS SHOWN IN DRG.

Material / Components Specification :

- 1 - S.S. NAME CUM WARNING PLATE (WITH DESCRIPTION TITLE, CIMFR, PESO, SR. NO., GAS GROUP, RATING, BIS MARKING, WARNING STATUS, etc...)
- 2 - GLASS - HEAT RESISTANCE CLEAR TOUCHENED GLASS 'TYPE-A' OF 'SUDHIR' BRAND
- 3 - CABLE ENTRIES - 2 Nos. M20 / 1/2" NPT / 3/4" ET SIZE CABLE ENTRIES FROM SIDE (REFER DRAWING)
- 4 - TERMINALS - 6 Nos. 2.5sq. mm (MICRO) CLIP-ON TYPE TERMINALS OF 'ELMEY/CONNECTWELL' MAKE

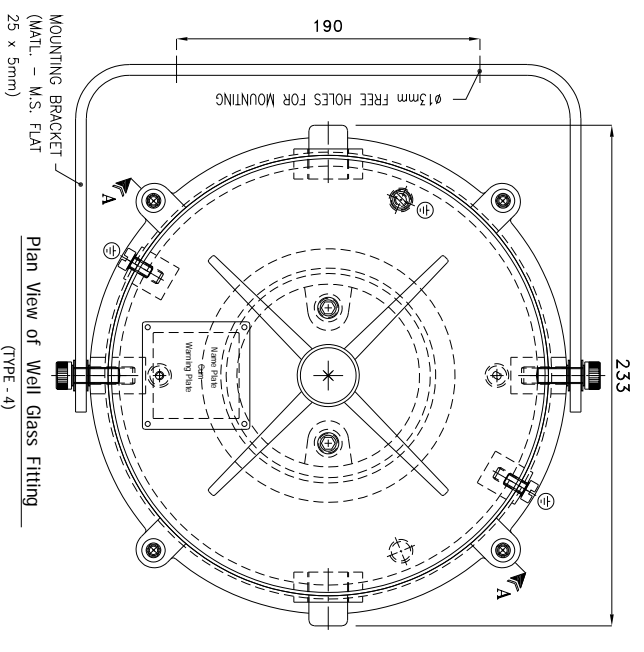
THIS DRAWING IS PROPERTY OF "SUDHIR SWITCHGEARS PVT. LTD." AND MUST BE RETURNED ON REQUEST IF IT IS SUBMITTED AS CONFIDENTIAL INFORMATION IN CONNECTION WITH ENQUIRY, TENDER, ORDER, OR CONTRACTS IT IS NOT TO BE USED FOR ANY OTHER PURPOSE OR ORDER NOR MAY IT RE-COPIED OR LENT WITHOUT OUR AUTHORITY IN WRITING.

NOTE :
 COMPONENT LAYOUT IS TENTATIVE RELOCATION OF PARTS & COMPONENTS IS POSSIBLE AT THE TIME OF ACTUAL MANUFACTURING.
 OVERALL DIMENSIONS ARE ±10mm

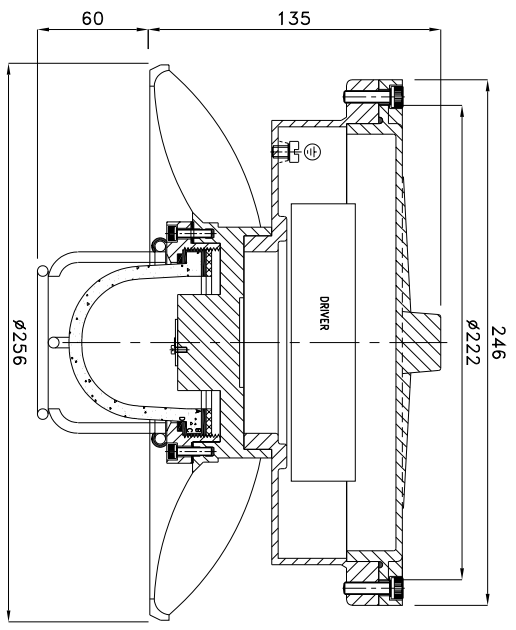
REV.	DATE	DESCRIPTION	DRN.	CHD.	APPD.	SCALE	CAT. No. WG/1240	MODEL No. WG/1240/D/50	DRN. profile	CHKD. JMS/KV	CARR. CERT. No. IN/CIMFR/TR21/P/H176	PESO No. : P546023/1	BIS LICENCE No. : CM/L-0002914461
Δ											Dt. 11/08/2021	Dt. 26/09/2022	

SUDHIR SWITCHGEARS PVT. LTD.
 130, MULBARI SAMACHAR MARG, MULBARI - 400 023

TITLE : FIP-WIP ENCLOSURE FOR WELL GLASS LIGHT
 FITTING SUITABLE FOR 50 WATTS LED LIGHT FITTING



Plan View of Well Glass Fitting
(TYPE - 4)
MOUNTING BRACKET - M.S. FLAT
(MATH. - M.S. FLAT
25 x 5mm)



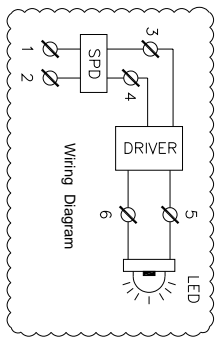
SECTIONAL VIEW OF WELL GLASS FITTING
SECTION - A-A'

Light Fitting Standard Specification :

- a) WATTAGE : 60 WATTS
- b) VOLTAGE : 140V-270V AC
- c) POWER FACTOR : >0.95
- d) INPUT FREQUENCY : 50 Hz
- e) EFFICACY : >100 LUMEN PER WATT
- f) COLOUR (CCT) : 3000K/5700K/6500K/OR AS SPECIFIED
- g) CRI : >80 RA
- h) TOTAL HARMONIC DISTORTION : ≤ 10% THD
- i) BEAM ANGLE : 120 DEGREE
- j) SURFACE TEMPERATURE : MAX. 70°
- k) SURGE PROTECTION : 10 KV SPD

Light Fitting Options :

- 1) MATERIAL CONSTRUCTION : STAINLESS STEEL
- 2) VOLTAGE : 220V DC/110V AC/110V DC/24V AC
- 3) GLASS TYPE : DOME / FLAT / LENS
- 4) BEAM ANGLE : LENS AVAILABLE 60/90/120 DEGREE
- 5) LED MAKE : CITIZEN/OSRAM/BRIDGELUX/EQUIVALENT
- 6) DRIVER MAKE : OSRAM/PHILIPS/FULHAM/EQUIVALENT
- 7) CABLE GLAND & PLUG : BRASS/S.S./ALUMINIUM
- 8) WIRE GUARD : M.S. WHITE EPOXY POWDER COATED / S.S.



Reference IS/IEC Standard as follows :

- 1 - FLAMEPROOF (Ex d) PROTECTION - IIA/IB & IIC, IS/IEC 60079-1 (2014)
- TEMPERATURE CLASS - T6
- 2 - INGRESS (IP) PROTECTION - IP-66, IS/IEC 60529 (2001). (Reaffirmed 2014)

Standard Specification :

- 1 - MATERIAL - CAST ALUMINIUM ALLOY
- 2 - FINISH - INSIDE & OUTSIDE LIGHT GREY EPOXY POWDER COATING SHADE No. 631 AS PER IS-5
- 3 - EARTHING - 1 No. INSIDE & 2 Nos. OUTSIDE M6 SIZE S.S./BRASS SCREWS WITH 2 Nos. PLAIN WASHER
- 4 - HARDWARE - STAINLESS STEEL
- 5 - GASKET - 'O' RING ENDLESS NEOPRENE RUBBER GASKET
- 6 - MOUNTING ARRGT. - AS SHOWN IN DRG.

Material / Components Specification :

- 1 - S.S. NAME CUM WARNING PLATE (WITH DESCRIPTION TITLE, CIMFR, PESO, SR. NO., GAS GROUP, RATING, BIS MARKING, WARNING STATUS, etc...)
- 2 - GLASS - HEAT RESISTANCE CLEAR TOUCHENED GLASS 'TYPE-A' OF 'SUDHIR' BRAND
- 3 - CABLE ENTRIES - 2 Nos. M20 / 1/2" NPT / 3/4" ET SIZE CABLE ENTRIES FROM SIDE (REFER DRAWING)
- 4 - TERMINALS - 6 Nos. 2.5sq. mm (MICRO) CLIP-ON TYPE TERMINALS OF 'ELMEY/CONNECTWELL' MAKE

NOTE :

COMPONENT LAYOUT IS TENTATIVE RELOCATION OF PARTS & COMPONENTS IS POSSIBLE AT THE TIME OF ACTUAL MANUFACTURING.
OVERALL DIMENSIONS ARE ±10mm

REV.	DATE	DESCRIPTION	DRN.	CHD.	APPD.	SCALE
Δ						
Δ						
Δ						

CAT. No.
WG/1240

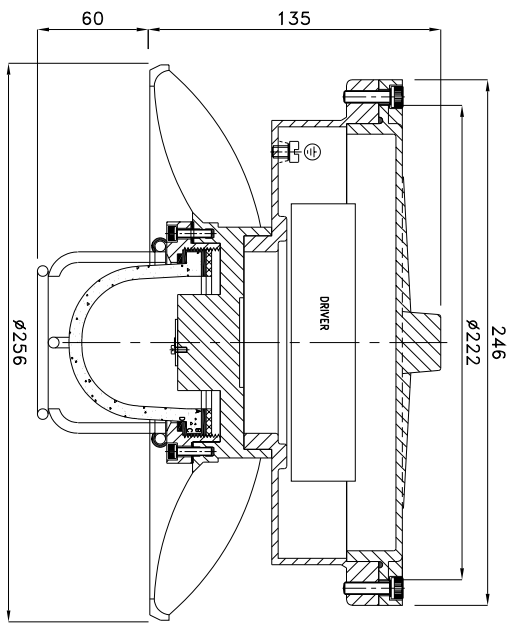
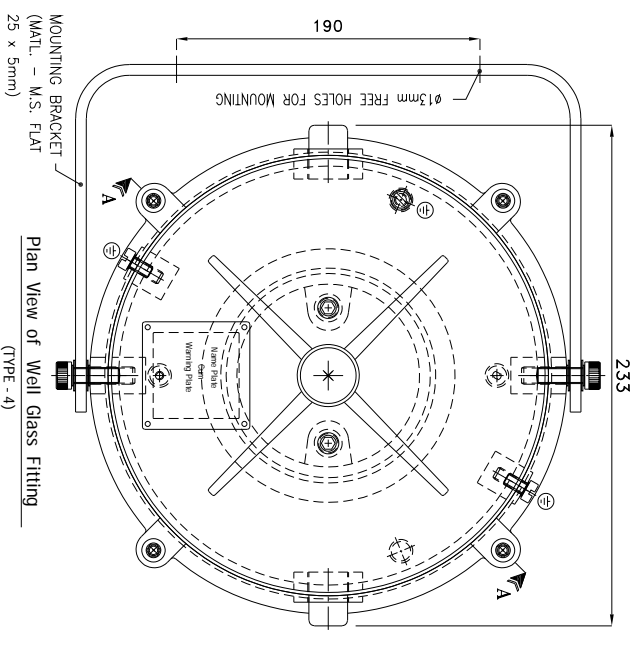
MODEL No.:
WG/1240/D/60

DRN.	profill	
CHD.	JASHAKH	
APPD.		
SHEET	1	OF 1
SCALE	N. T. S.	REV.- 0

SUDHIR SWITCHGEARS PVT. LTD.
130, MULBARI SAMACHAR MARG, MULBARI - 400 023

TITLE : **FLP-WIP ENCLOSURE FOR WELL GLASS LIGHT FITTING SUITABLE FOR 60 WATTS LED LIGHT FITTING**

CHKD. CERT. No.		PESO No. :	BIS LICENCE No. :
IN/CIMFR/TR21/P/H176		P546023/1	CM/L-0002914461
Dt. 11/08/2021		Dt. 26/09/2022	

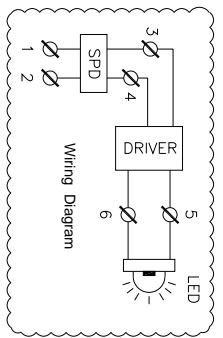


Light Fitting Standard Specification :

- a) WATTAGE : 70 WATTS
- b) VOLTAGE : 140V-270V AC
- c) POWER FACTOR : >0.95
- d) INPUT FREQUENCY : 50 Hz
- e) EFFICACY : >100 LUMEN PER WATT
- f) COLOUR (CCT) : 3000K/5700K/6500K/OR AS SPECIFIED
- g) CRI : >80 RA
- h) TOTAL HARMONIC DISTORTION : ≤ 10% THD
- i) BEAM ANGLE : 120 DEGREE
- j) SURFACE TEMPERATURE : MAX. 70°
- k) SURGE PROTECTION : 10 KV SPD

Light Fitting Options :

- 1) MATERIAL CONSTRUCTION : STAINLESS STEEL
- 2) VOLTAGE : 220V DC/110V AC/110V DC/24V AC
- 3) GLASS TYPE : DOME / FLAT / LENS
- 4) BEAM ANGLE : LENS AVAILABLE 60/90/120 DEGREE
- 5) LED MAKE : CITIZEN/OSRAM/BRIDGELUX/EQUIVALENT
- 6) DRIVER MAKE : OSRAM/PHILIPS/FULHAM/EQUIVALENT
- 7) CABLE GLAND & PLUG : BRASS/S.S./ALUMINIUM
- 8) WIRE GUARD : M.S. WHITE EPOXY POWDER COATED / S.S.



Reference IS/IEC Standard as follows :

- 1 - FLAMEPROOF (Ex d) PROTECTION - IIA/IB & IIC, IS/IEC 60079-1 (2014)
- TEMPERATURE CLASS - T6
- 2 - INGRESS (IP) PROTECTION - IP-66, IS/IEC 60529 (2001). (Reaffirmed 2014)

Standard Specification :

- 1 - MATERIAL - CAST ALUMINIUM ALLOY
- 2 - FINISH - INSIDE & OUTSIDE LIGHT GREY EPOXY POWDER COATING SHADE No. 631 AS PER IS-5
- 3 - EARTHING - 1 No. INSIDE & 2 Nos. OUTSIDE M6 SIZE S.S./BRASS SCREWS WITH 2 Nos. PLAIN WASHER
- 4 - HARDWARE - STAINLESS STEEL
- 5 - GASKET - 'O' RING ENDLESS NEOPRENE RUBBER GASKET
- 6 - MOUNTING ARRGT. - AS SHOWN IN DRG.

Material / Components Specification :

- 1 - S.S. NAME CUM WARNING PLATE (WITH DESCRIPTION TITLE, CIMFR, PESO, SR. NO., GAS GROUP, RATING, BIS MARKING, WARNING STATUS, etc...)
- 2 - GLASS - HEAT RESISTANCE CLEAR TOUCHENED GLASS 'TYPE-A' OF 'SUDHIR' BRAND
- 3 - CABLE ENTRIES - 2 Nos. M20 / 1/2" NPT / 3/4" ET SIZE CABLE ENTRIES FROM SIDE (REFER DRAWING)
- 4 - TERMINALS - 6 Nos. 2.5sq. mm (MICRO) CLIP-ON TYPE TERMINALS OF 'ELMEY/CONNECTWELL' MAKE

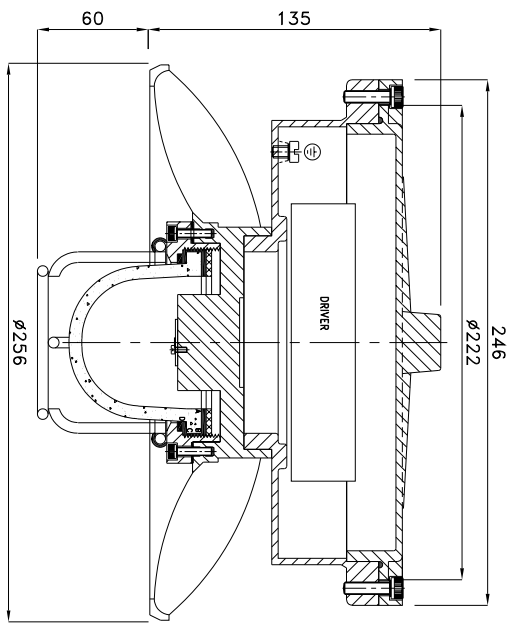
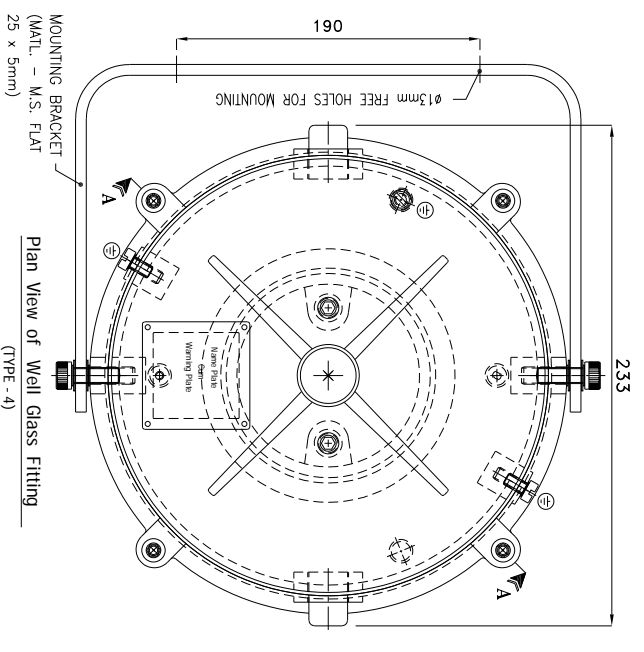
THIS DRAWING IS PROPERTY OF "SUDHIR SWITCHGEARS PVT. LTD." AND MUST BE RETURNED ON REQUEST IF IT IS SUBMITTED AS CONFIDENTIAL INFORMATION IN CONNECTION WITH ENQUIRY, TENDER, ORDER, OR CONTRACTS IT IS NOT TO BE USED FOR ANY OTHER PURPOSE OR ORDER NOR MAY IT RE-COPIED OR LENT WITHOUT OUR AUTHORITY IN WRITING.

NOTE :
 COMPONENT LAYOUT IS TENTATIVE RELOCATION OF PARTS & COMPONENTS IS POSSIBLE AT THE TIME OF ACTUAL MANUFACTURING.
 OVERALL DIMENSIONS ARE ±10mm

REV.	DATE	DESCRIPTION	DRN.	CHD.	APPD.	SCALE	CAT. No. WG/1240	MODEL No. WG/1240/D/70	DRN. profile	CHKD. JMS/KV	CARR. CERT. No. IN/CIMFR/TR21/P/H176	PESO No. : P546023/1	BIS LICENCE No. : CM/L-0002914461
Δ											Dt. 11/08/2021	Dt. 26/09/2022	

SUDHIR SWITCHGEARS PVT. LTD.
 130, MULBARI SAMACHAR MARG, MULBARI - 400 023

TITLE : FLP-WIP ENCLOSURE FOR WELL GLASS LIGHT
FITTING SUITABLE FOR 70 WATTS LED LIGHT FITTING

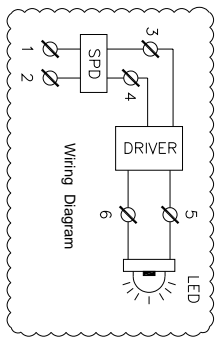


Light Fitting Standard Specification :

- a) WATTAGE : 75 WATTS
- b) VOLTAGE : 140V-270V AC
- c) POWER FACTOR : >0.95
- d) INPUT FREQUENCY : 50 Hz
- e) EFFICACY : >100 LUMEN PER WATT
- f) COLOUR (CCT) : 3000K/5700K/6500K/OR AS SPECIFIED
- g) CRI : >80 RA
- h) TOTAL HARMONIC DISTORTION : ≤ 10% THD
- i) BEAM ANGLE : 120 DEGREE
- j) SURFACE TEMPERATURE : MAX. 70°
- k) SURGE PROTECTION : 10 KV SPD

Light Fitting OPTIONS :

- 1) MATERIAL CONSTRUCTION : STAINLESS STEEL
- 2) VOLTAGE : 220V DC/110V AC/110V DC/24V AC
- 3) GLASS TYPE : DOME / FLAT / LENS
- 4) BEAM ANGLE : LENS AVAILABLE 60/90/120 DEGREE
- 5) LED MAKE : CITIZEN/OSRAM/BRIDGELUX/EQUIVALENT
- 6) DRIVER MAKE : OSRAM/PHILIPS/FULHAM/EQUIVALENT
- 7) CABLE GLAND & PLUG : BRASS/S.S./ALUMINIUM
- 8) WIRE GUARD : M.S. WHITE EPOXY POWDER
COATED / S.S.



Reference IS/IEC Standard as follows :

- 1 - FLAMEPROOF (Ex d) PROTECTION - IIA/IIb & IIC, IS/IEC 60079-1 (2014)
- TEMPERATURE CLASS - T6
- 2 - INGRESS (IP) PROTECTION - IP-66, IS/IEC 60529 (2001). (Reaffirmed 2014)

Standard Specification :

- 1 - MATERIAL - CAST ALUMINIUM ALLOY
- 2 - FINISH - INSIDE & OUTSIDE LIGHT GREY EPOXY POWDER COATING
SHADE No. 631 AS PER IS-5
- 3 - EARTHING - 1 No. INSIDE & 2 Nos. OUTSIDE M6 SIZE S.S./BRASS
SCREWS WITH 2 Nos. PLAIN WASHER
- 4 - HARDWARE - STAINLESS STEEL
- 5 - GASKET - 'O' RING ENDLESS NEOPRENE RUBBER GASKET
- 6 - MOUNTING ARRGT. - AS SHOWN IN DRG.

Material / Components Specification :

- 1 - S.S. NAME CUM WARNING PLATE (WITH DESCRIPTION TITLE, CIMFR, PESO, SR. NO., GAS GROUP, RATING, BIS MARKING, WARNING STATUS, etc...)
- 2 - GLASS - HEAT RESISTANCE CLEAR TOUCHENED GLASS 'TYPE-A' OF 'SUDHIR' BRAND
- 3 - CABLE ENTRIES - 2 Nos. M20 / 1/2" NPT / 3/4" ET SIZE CABLE ENTRIES FROM SIDE (REFER DRAWING)
- 4 - TERMINALS - 6 Nos. 2.5sq. mm (MICRO) CLIP-ON TYPE TERMINALS OF 'ELMEY/CONNECTWELL' MAKE

THIS DRAWING IS PROPERTY OF "SUDHIR SWITCHGEARS PVT. LTD." AND MUST BE RETURNED ON REQUEST IF IT IS SUBMITTED AS CONFIDENTIAL INFORMATION IN CONNECTION WITH ENQUIRY, TENDER, ORDER, OR CONTRACTS IT IS NOT TO BE USED FOR ANY OTHER PURPOSE OR ORDER NOR MAY IT RE-COPIED OR LENT WITHOUT OUR AUTHORITY IN WRITING.

THANE

NOTE :		CAT. No.	WG/1240
• COMPONENT LAYOUT IS TENTATIVE RELOCATION OF PARTS & COMPONENTS IS POSSIBLE AT THE TIME OF ACTUAL MANUFACTURING.		MODEL No.:	WG/1240/D/75
• OVERALL DIMENSIONS ARE ±10mm		DRN. profile	MSKHV
DRN.	APPD.	CHKD.	APPD.
APPD.	SHEET	1	OF
DRN.	SCALE	N. T. S.	REV.- 0
REV.	DATE	DESCRIPTION	DRN.

SUDHIR SWITCHGEARS PVT. LTD.

130, MULBEA SAMACHAR MARG, MULBEA - 400 023

TITLE : **FLP-WIP ENCLOSURE FOR WELL GLASS LIGHT FITTING SUITABLE FOR 75 WATTS LED LIGHT FITTING**

DRN. : IN/CIMFR/TR21/P/H176

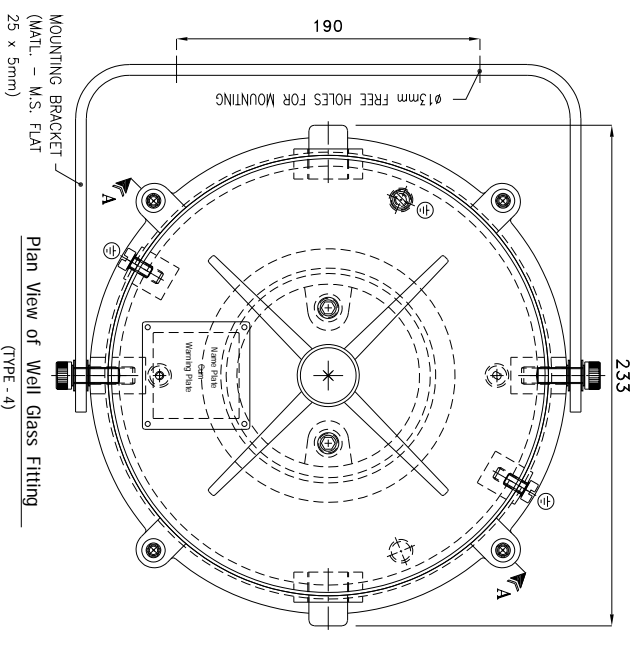
CHKD. : P546023/1

Dt. : 11/08/2021

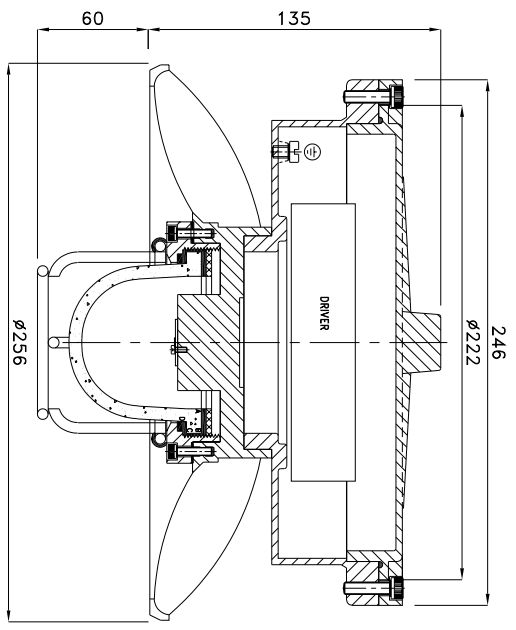
PESO No. : CM/L-0002914461

Dt. : 26/09/2022

BIS LICENCE No. :



Plan View of Well Glass Fitting
(TYPE - 4)



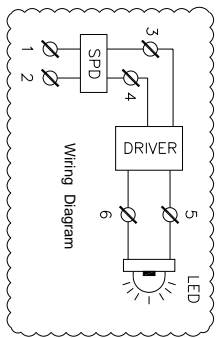
SECTIONAL VIEW OF WELL GLASS FITTING
SECTION -- A-A'

Light Fitting Standard Specification :

- a) WATTAGE : 80 WATTS
- b) VOLTAGE : 140V-270V AC
- c) POWER FACTOR : >0.95
- d) INPUT FREQUENCY : 50 Hz
- e) EFFICACY : >100 LUMEN PER WATT
- f) COLOUR (CCT) : 3000K/5700K/6500K/OR AS SPECIFIED
- g) CRI : >80 RA
- h) TOTAL HARMONIC DISTORTION : ≤ 10% THD
- i) BEAM ANGLE : 120 DEGREE
- j) SURFACE TEMPERATURE : MAX. 70°
- k) SURGE PROTECTION : 10 KV SPD

Light Fitting Options :

- 1) MATERIAL CONSTRUCTION : STAINLESS STEEL
- 2) VOLTAGE : 220V DC/110V AC/110V DC/24V AC
- 3) GLASS TYPE : DOME / FLAT / LENS
- 4) BEAM ANGLE : LENS AVAILABLE 60/90/120 DEGREE
- 5) LED MAKE : CITIZEN/OSRAM/BRIDGELUX/EQUIVALENT
- 6) DRIVER MAKE : OSRAM/PHILIPS/FULHAM/EQUIVALENT
- 7) CABLE GLAND & PLUG : BRASS/S.S./ALUMINIUM
- 8) WIRE GUARD : M.S. WHITE EPOXY POWDER COATED / S.S.



Reference IS/IEC Standard as follows :

- 1 - FLAMEPROOF (Ex d) PROTECTION - IIA/IIb & IIC, IS/IEC 60079-1 (2014)
- TEMPERATURE CLASS - T6
- 2 - INGRESS (IP) PROTECTION - IP-66, IS/IEC 60529 (2001). (Reaffirmed 2014)

Standard Specification :

- 1 - MATERIAL - CAST ALUMINIUM ALLOY
- 2 - FINISH - INSIDE & OUTSIDE LIGHT GREY EPOXY POWDER COATING SHADE No. 631 AS PER IS-5
- 3 - EARTHING - 1 No. INSIDE & 2 Nos. OUTSIDE M6 SIZE S.S./BRASS SCREWS WITH 2 Nos. PLAIN WASHER
- 4 - HARDWARE - STAINLESS STEEL
- 5 - GASKET - 'O' RING ENDLESS NEOPRENE RUBBER GASKET
- 6 - MOUNTING ARRGT. - AS SHOWN IN DRG.

Material / Components Specification :

- 1 - S.S. NAME CUM WARNING PLATE (WITH DESCRIPTION TITLE, CIMFR, PESO, SR. NO., GAS GROUP, RATING, BIS MARKING, WARNING STATUS, etc...)
- 2 - GLASS - HEAT RESISTANCE CLEAR TOUCHENED GLASS 'TYPE-A' OF 'SUDHIR' BRAND
- 3 - CABLE ENTRIES - 2 Nos. M20 / 1/2" NPT / 3/4" ET SIZE CABLE ENTRIES FROM SIDE (REFER DRAWING)
- 4 - TERMINALS - 6 Nos. 2.5sq. mm (MICRO) CLIP-ON TYPE TERMINALS OF 'ELMEY/CONNECTWELL' MAKE

NOTE :

COMPONENT LAYOUT IS TENTATIVE RELOCATION OF PARTS & COMPONENTS IS POSSIBLE AT THE TIME OF ACTUAL MANUFACTURING.
OVERALL DIMENSIONS ARE ±10mm

REV.	DATE	DESCRIPTION	DRN.	CHD.	APPD.	SCALE	REV.-0

THIS DRAWING IS PROPERTY OF "SUDHIR SWITCHGEARS PVT. LTD." AND MUST BE RETURNED ON REQUEST IF IT IS SUBMITTED AS CONFIDENTIAL INFORMATION IN CONNECTION WITH ENQUIRY, TENDER, ORDER, OR CONTRACTS IT IS NOT TO BE USED FOR ANY OTHER PURPOSE OR ORDER NOR MAY IT RE-COPIED OR LENT WITHOUT OUR AUTHORITY IN WRITING.